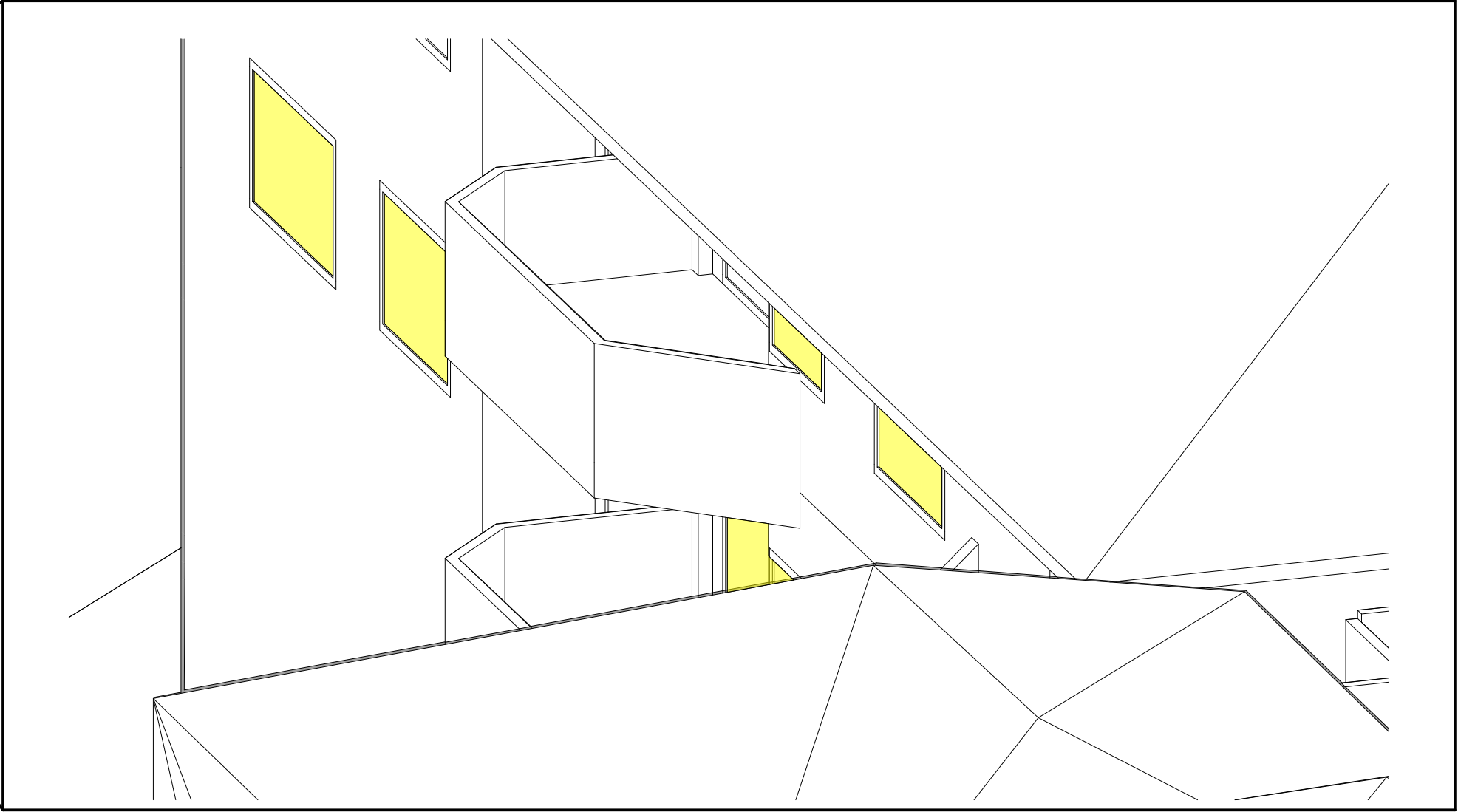


1 ADG BUILDING MASSING-VIEW FROM SUN- 21/06 - 3:00PM

 UNIT RECEIVING SOLAR

THESE DIAGRAMS CONFIRM THAT 3 OUT OF 5
UNITS ON 15 PARK AVENUE WILL STILL RECEIVE
SUNLIGHT DURING THE MIDDLE OF WINTER.



2 ADG BUILDING MASSING-VIEW FROM SUN- 21/06 - 3:00PM BLOW UP

REV	DESCRIPTION	BY	DATE
P1	-	-	-
P2	PRE- DA ISSUE 02	JW	05/09/19
P3	DA PRELIM. ISSUE 01- CONSULTANTS	JW	11/11/19
P3.1	DA PRELIM. ISSUE 02- CONSULTANTS	JW	20/11/19
P4	DA ISSUE 01	JW	15/01/20
P5	DA ISSUE 02. SIGNAGE REMOVED	LL	26/02/20
P6	DA ISSUE 02. ACCESSIBLE NOTES	LL	04/03/20
P7	DA ISSUE 03. RESPONSE TO RFI	LL	23/07/20

CLIENT:
ST MARY COMMUNITY GROUP

PROJECT TITLE:
PROPOSED MEDICAL CENTRE DEVELOPMENT
16 PARK AVENUE WESTMEAD PARRAMATTA NSW 2145
AUSTRALIA
DRAWING TITLE:
VIEWS FROM SUN 21/06- BUILDING
MASSING WITH ADG COMPLAINT SETBACK
BLOW UP

NORTH POINT:

DRAWN BY: JW & LL
CHECKED BY: LL & PI
SCALE: SHOWN AT A3
PROJECT No: P552
DA 24 P7
stage. dwg no. revision